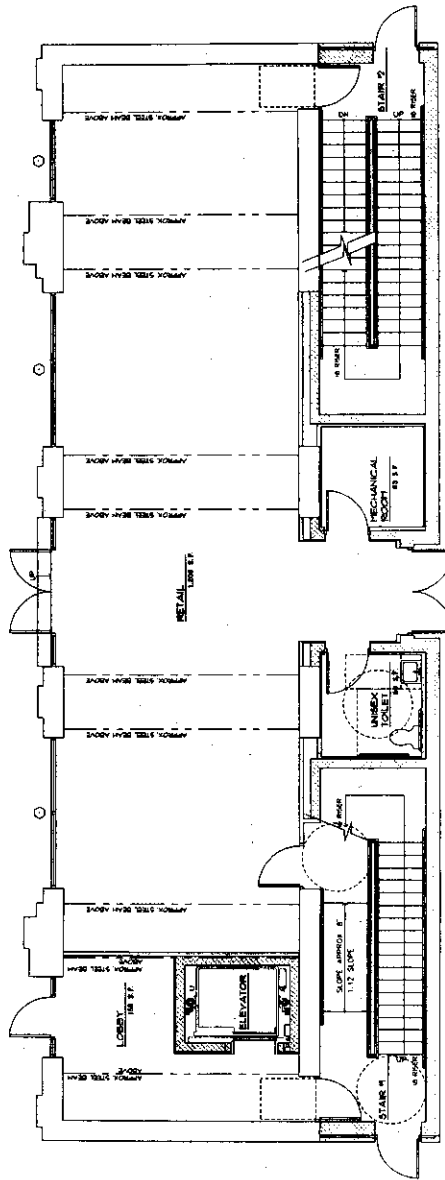


1 BASEMENT FLOOR PLAN  
 A1.1 SCALE: 1/4" = 1'-0"

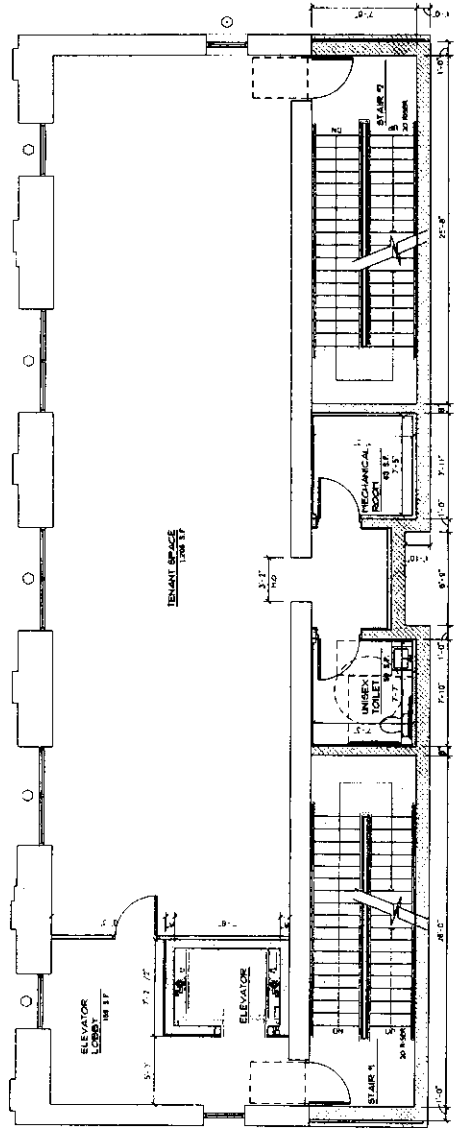


2 FIRST FLOOR PLAN  
 A1.1 SCALE: 1/4" = 1'-0"

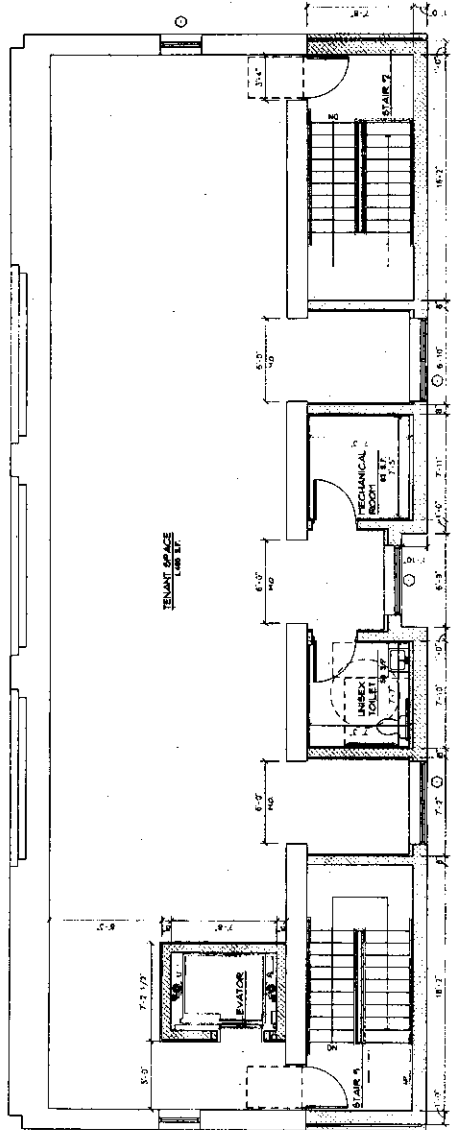
156 S. BERTHMAN ROAD, PHILADELPHIA, PA 19102 ARCHITECTS: <b>Kramer</b> PROJECT NO: 020002		REVISIONS NO. DATE 1 2 3 4 5 6 7 8 9 10
156 S. BERTHMAN ROAD, PHILADELPHIA, PA 19102 ARCHITECTS: <b>Kramer</b> PROJECT NO: 020002		REVISIONS DATE NO. DATE 1 2 3 4 5 6 7 8 9 10

**BASEMENT & FIRST FLOOR PLANS**  
**UNIVERSAL ROYAL THEATER**  
 156 S. BERTHMAN ROAD  
 PHILADELPHIA, PA 19102  
**UNIVERSAL CORPORATE CENTER**  
 156 S. BERTHMAN ROAD  
 PHILADELPHIA, PA 19102

A1.1



1 SECOND FLOOR PLAN  
 A1.2 SCALE: 1/4" = 1'-0"



2 THIRD FLOOR PLAN  
 A1.2 SCALE: 1/4" = 1'-0"

REV	DESCRIPTION	DATE

Kramer  
 marks

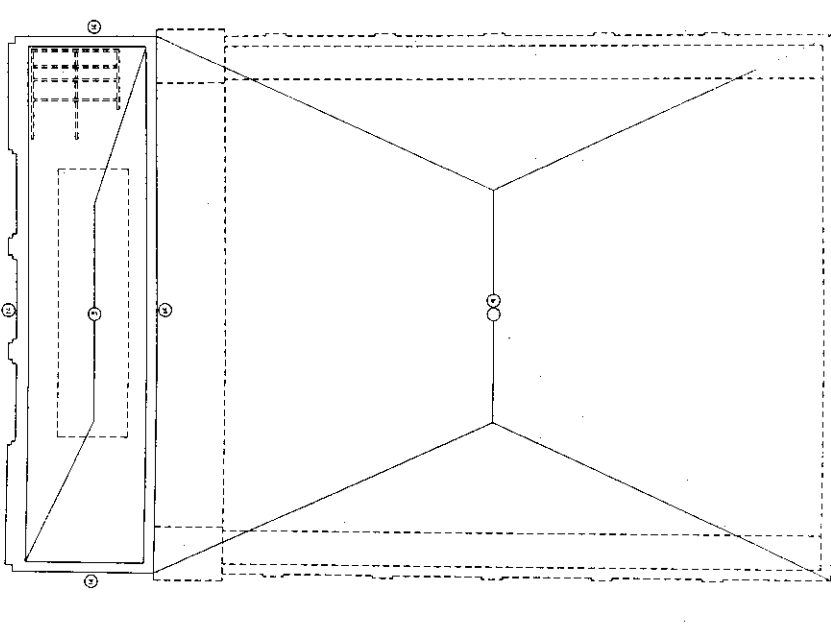
UNIVERSAL ROYAL THEATER	
124 15th SOUTH STREET	PHILADELPHIA, PA 19106
UNIVERSAL CORPORATE CENTER	
805 SOUTH 15th STREET	PHILADELPHIA, PA 19106
A1.2	

**GENERAL DEMOLITION NOTES**

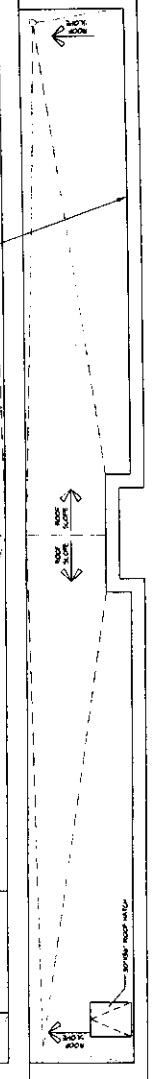
- VERIFY ALL DIMENSIONS AND LOCATIONS OF ALL EXISTING STRUCTURES AND UTILITIES PRIOR TO DEMOLITION.
- REMOVE ALL EXISTING STRUCTURES AND UTILITIES AS SHOWN ON THIS PLAN.
- REMOVE ALL EXISTING ROOFING AND FLOORING MATERIALS.
- REMOVE ALL EXISTING INTERIORS AND PARTITION WALLS.
- REMOVE ALL EXISTING MECHANICAL, ELECTRICAL AND PLUMBING SYSTEMS.
- REMOVE ALL EXISTING ASBESTOS CONTAINING MATERIALS (ACM) AND LEAD PAINT.
- REMOVE ALL EXISTING HAZARDOUS MATERIALS AND CONTAMINATED SOILS.
- REMOVE ALL EXISTING REINFORCING STEEL AND WELDED CONNECTIONS.
- REMOVE ALL EXISTING FOUNDATION WALLS AND FOOTINGS.
- REMOVE ALL EXISTING CONCRETES AND MASONRY.
- REMOVE ALL EXISTING SITEWORK AND UTILITIES.
- REMOVE ALL EXISTING SURFACING AND PAVING.
- REMOVE ALL EXISTING CURBS AND GUTTERS.
- REMOVE ALL EXISTING EXTERIOR FINISHES AND PAINTS.
- REMOVE ALL EXISTING EXTERIOR WALLS AND PARTITION WALLS.
- REMOVE ALL EXISTING EXTERIOR ROOFING AND FLOORING MATERIALS.

**DEMOLITION KEY NOTES**

- REMOVE ALL EXISTING STRUCTURES AND UTILITIES AS SHOWN ON THIS PLAN.
- REMOVE ALL EXISTING ROOFING AND FLOORING MATERIALS.
- REMOVE ALL EXISTING INTERIORS AND PARTITION WALLS.
- REMOVE ALL EXISTING MECHANICAL, ELECTRICAL AND PLUMBING SYSTEMS.
- REMOVE ALL EXISTING ASBESTOS CONTAINING MATERIALS (ACM) AND LEAD PAINT.
- REMOVE ALL EXISTING HAZARDOUS MATERIALS AND CONTAMINATED SOILS.
- REMOVE ALL EXISTING REINFORCING STEEL AND WELDED CONNECTIONS.
- REMOVE ALL EXISTING FOUNDATION WALLS AND FOOTINGS.
- REMOVE ALL EXISTING CONCRETES AND MASONRY.
- REMOVE ALL EXISTING SITEWORK AND UTILITIES.
- REMOVE ALL EXISTING SURFACING AND PAVING.
- REMOVE ALL EXISTING CURBS AND GUTTERS.
- REMOVE ALL EXISTING EXTERIOR FINISHES AND PAINTS.
- REMOVE ALL EXISTING EXTERIOR WALLS AND PARTITION WALLS.
- REMOVE ALL EXISTING EXTERIOR ROOFING AND FLOORING MATERIALS.



**1 ROOF DEMOLITION PLAN**  
SCALE: 1/4" = 1'-0"



**2 ROOF PLAN**  
SCALE: 1/4" = 1'-0"

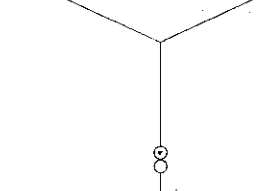
Kramer  
marks

NO.	REVISIONS	DATE

156 S. BERTHMAN ROAD  
PHILADELPHIA, PA 19102  
WWW.KRAMERMARKS.COM

**ROOF DEMOLITION PLAN & FLOOR PLAN**  
**UNIVERSAL ROYAL THEATER**  
1324 SOUTH STREET  
PHILADELPHIA, PA 19146  
**UNIVERSAL CORPORATE CENTER**  
800 SOUTH 15TH STREET  
PHILADELPHIA, PA 19146

**A2.1**



**LEGEND**

**1 ROOF DEMOLITION PLAN**  
SCALE: 1/4" = 1'-0"

**LEGEND**

(Symbol)	EXIST. WALL TO REMAIN
(Symbol)	EXIST. WALL TO BE REMOVED
(Symbol)	3/8" DIA. CORE TO REMAIN
(Symbol)	3/8" DIA. CORE TO BE REMOVED
(Symbol)	REMOVE TO BE REFINISH
(Symbol)	REMOVE TO BE REPAIR

**GENERAL DEMOLITION NOTES**

1. REMOVE ALL EXISTING MATERIALS TO BE DEMOLISHED TO THE FINISH SURFACE UNLESS OTHERWISE NOTED.

2. REMOVE ALL EXISTING MATERIALS TO BE DEMOLISHED TO THE FINISH SURFACE UNLESS OTHERWISE NOTED.

3. REMOVE ALL EXISTING MATERIALS TO BE DEMOLISHED TO THE FINISH SURFACE UNLESS OTHERWISE NOTED.

4. REMOVE ALL EXISTING MATERIALS TO BE DEMOLISHED TO THE FINISH SURFACE UNLESS OTHERWISE NOTED.

5. REMOVE ALL EXISTING MATERIALS TO BE DEMOLISHED TO THE FINISH SURFACE UNLESS OTHERWISE NOTED.

6. REMOVE ALL EXISTING MATERIALS TO BE DEMOLISHED TO THE FINISH SURFACE UNLESS OTHERWISE NOTED.

7. REMOVE ALL EXISTING MATERIALS TO BE DEMOLISHED TO THE FINISH SURFACE UNLESS OTHERWISE NOTED.

8. REMOVE ALL EXISTING MATERIALS TO BE DEMOLISHED TO THE FINISH SURFACE UNLESS OTHERWISE NOTED.

9. REMOVE ALL EXISTING MATERIALS TO BE DEMOLISHED TO THE FINISH SURFACE UNLESS OTHERWISE NOTED.

10. REMOVE ALL EXISTING MATERIALS TO BE DEMOLISHED TO THE FINISH SURFACE UNLESS OTHERWISE NOTED.

**DEMOLITION KEY NOTES**

1. REMOVE EXISTING MATERIALS TO BE DEMOLISHED TO THE FINISH SURFACE UNLESS OTHERWISE NOTED.

2. REMOVE EXISTING MATERIALS TO BE DEMOLISHED TO THE FINISH SURFACE UNLESS OTHERWISE NOTED.

3. REMOVE EXISTING MATERIALS TO BE DEMOLISHED TO THE FINISH SURFACE UNLESS OTHERWISE NOTED.

4. REMOVE EXISTING MATERIALS TO BE DEMOLISHED TO THE FINISH SURFACE UNLESS OTHERWISE NOTED.

5. REMOVE EXISTING MATERIALS TO BE DEMOLISHED TO THE FINISH SURFACE UNLESS OTHERWISE NOTED.

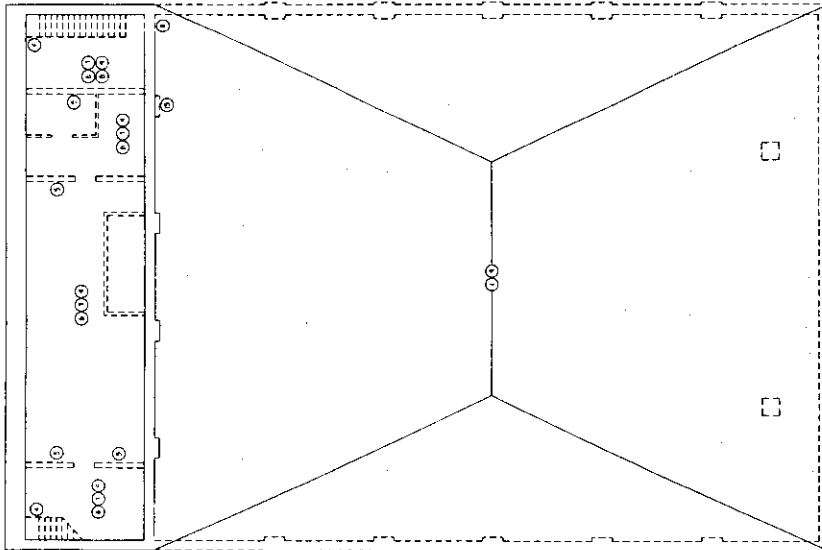
6. REMOVE EXISTING MATERIALS TO BE DEMOLISHED TO THE FINISH SURFACE UNLESS OTHERWISE NOTED.

7. REMOVE EXISTING MATERIALS TO BE DEMOLISHED TO THE FINISH SURFACE UNLESS OTHERWISE NOTED.

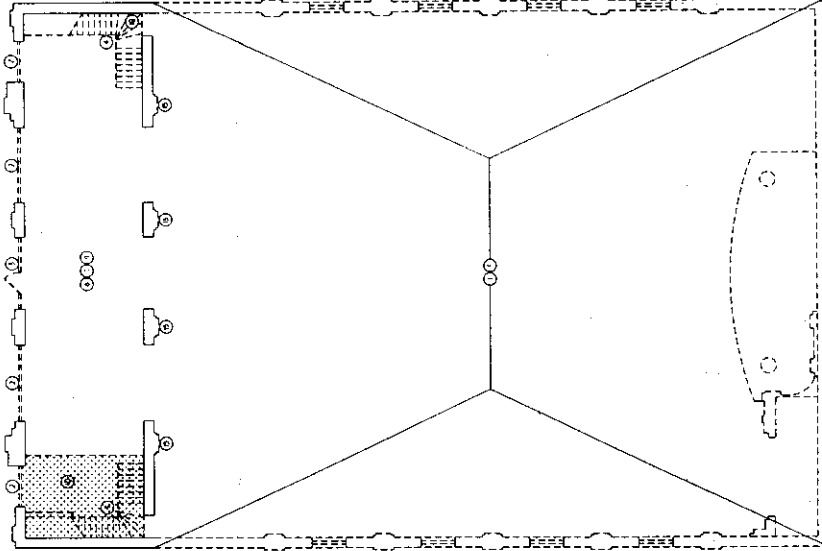
8. REMOVE EXISTING MATERIALS TO BE DEMOLISHED TO THE FINISH SURFACE UNLESS OTHERWISE NOTED.

9. REMOVE EXISTING MATERIALS TO BE DEMOLISHED TO THE FINISH SURFACE UNLESS OTHERWISE NOTED.

10. REMOVE EXISTING MATERIALS TO BE DEMOLISHED TO THE FINISH SURFACE UNLESS OTHERWISE NOTED.



1. BASEMENT DEMOLITION PLAN  
D1.1 SCALE: 1/8" = 1'-0"



2. FIRST FLOOR DEMOLITION PLAN  
D1.1 SCALE: 1/8" = 1'-0"

Kramer  
marks

NO.	DATE	REVISIONS
1		
2		
3		
4		
5		
6		
7		
8		
9		
10		

**BASEMENT & FIRST FLOOR DEMOLITION PLANS**

UNIVERSAL ROYAL THEATER  
136 S. BROAD ST.  
PHILADELPHIA, PA 19106

UNIVERSAL CORPORATE CENTER  
800 SOUTH 15TH STREET  
PHILADELPHIA, PA 19146

D1.1

**LEGEND**

	EXISTING WALL
	EXISTING WALL TO BE DEMOLISHED
	WALL TO BE RELOCATED
	EXISTING DOOR TO REMAIN
	DOOR TO BE RELOCATED
	DOOR TO BE REMOVED

**GENERAL DEMOLITION NOTES**

1. THE CONTRACTOR SHALL VERIFY THE LOCATION AND DEPTH OF ALL UTILITIES (ELECTRIC, GAS, WATER, SEWER, RADIATION, ETC.) PRIOR TO THE START OF DEMOLITION WORK.

2. THE CONTRACTOR SHALL BE RESPONSIBLE FOR OBTAINING ALL NECESSARY PERMITS AND APPROVALS FROM THE APPROPRIATE AGENCIES.

3. ALL DEMOLITION WORK SHALL BE CONDUCTED IN ACCORDANCE WITH THE OSHA SAFETY STANDARDS AND THE CITY OF PHILADELPHIA DEMOLITION ORDINANCES.

4. THE CONTRACTOR SHALL MAINTAIN ACCESS TO ALL ADJACENT PROPERTIES AND PUBLIC UTILITIES AT ALL TIMES.

5. ALL DEMOLITION DEBRIS SHALL BE PROPERLY DISPOSED OF AT AN APPROVED DEBRIS DISPOSAL SITE.

**DEMOLITION KEY NOTES**

1. REMOVE EXISTING WALLS AND PARTITION WALLS AS SHOWN ON THIS PLAN.

2. REMOVE EXISTING DOORS AND RELOCATE AS SHOWN ON THIS PLAN.

3. REMOVE EXISTING CEILING AND PARTITION WALLS AS SHOWN ON THIS PLAN.

4. REMOVE EXISTING FLOOR AND PARTITION WALLS AS SHOWN ON THIS PLAN.

5. REMOVE EXISTING ROOF AND PARTITION WALLS AS SHOWN ON THIS PLAN.

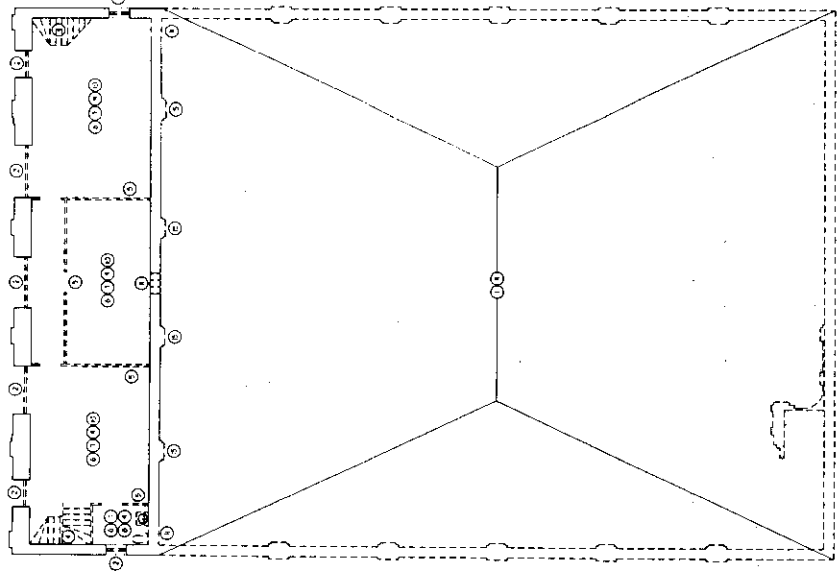
6. REMOVE EXISTING STAIRS AND PARTITION WALLS AS SHOWN ON THIS PLAN.

7. REMOVE EXISTING ELEVATORS AND PARTITION WALLS AS SHOWN ON THIS PLAN.

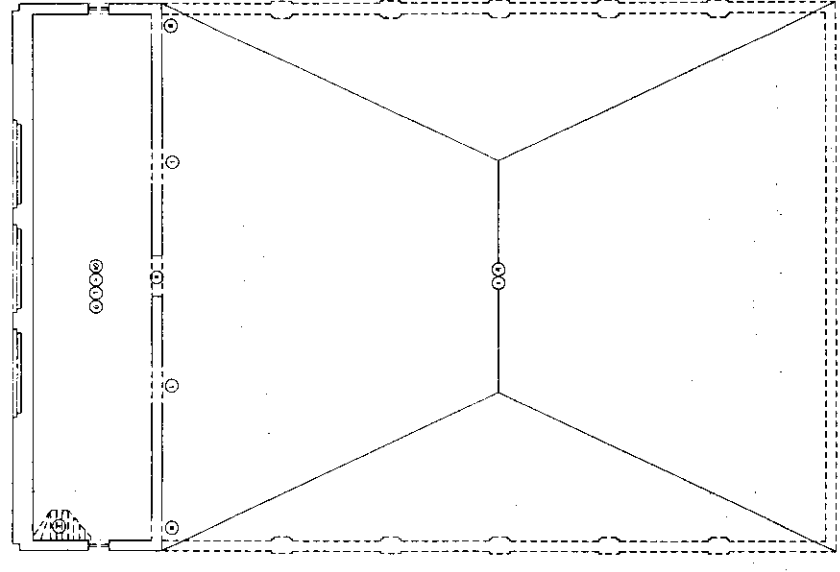
8. REMOVE EXISTING MECHANICAL AND ELECTRICAL SYSTEMS AS SHOWN ON THIS PLAN.

9. REMOVE EXISTING SIGNAGE AND PARTITION WALLS AS SHOWN ON THIS PLAN.

10. REMOVE EXISTING CURBS AND PARTITION WALLS AS SHOWN ON THIS PLAN.



**1 SECOND FLOOR DEMOLITION PLAN**  
D1.2 SCALE: 1/8" = 1'-0"



**2 THIRD FLOOR DEMOLITION PLAN**  
D1.2 SCALE: 1/8" = 1'-0"

**Kramer**  
**marks**

REVISIONS	DATE

**BASEMENT & FIRST FLOOR DEMOLITION PLANS**

UNIVERSAL ROYAL THEATER	1524-1534 SOUTH STREET PHILADELPHIA, PA 19106
UNIVERSAL CORPORATE CENTER	800 SOUTH 15TH STREET PHILADELPHIA, PA 19106

DATE	3-1-2009
JOB NO.	100000000
SCALE	1/8" = 1'-0"
SHEET NO.	D1.2
TOTAL SHEETS	2