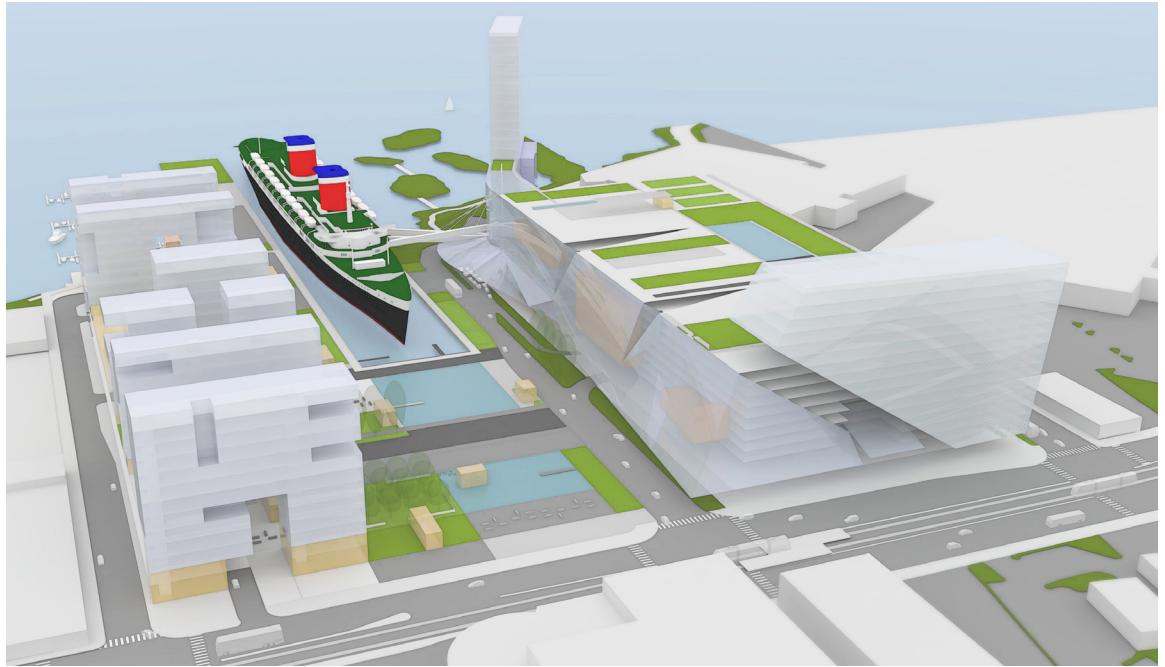


Delaware River Waterfront
Urban Development Casino /
S.S. United States
Adaptive Re-use

STEPHEN VARENHORST ARCHITECTS



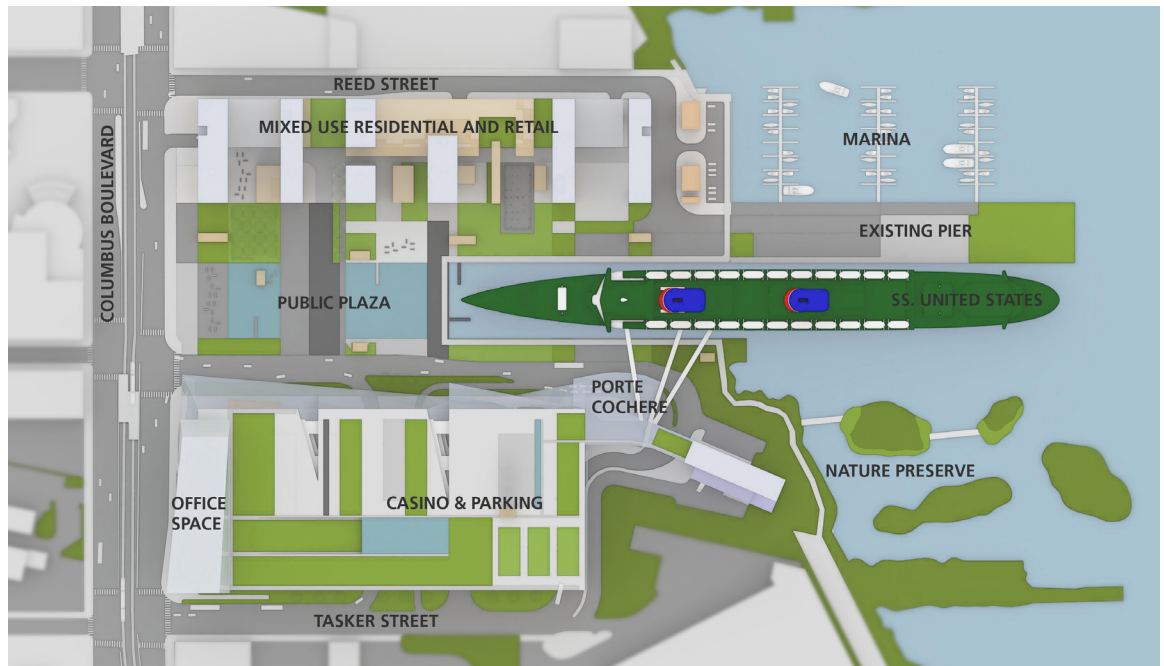
Top: View looking Southeast

Client SS United States Conservancy
Location Philadelphia, PA
Program In our proposal we have reconnected the City of Philadelphia to the Delaware River waterfront by creating a dramatic development that provides an exciting new home for the casino and a large public park with the SS United States as its centerpiece.

The first phase of the casino would be built on land with significant area for expansion. On-site traffic flows comfortably off Columbus Avenue and along to the grand entrance between the ship and the building. In addition, a subsequent phase of the casino, plus restaurants, bars, ship museum areas, public viewing areas and a boutique hotel can all be accommodated on board the permanently moored vessel. By doing so land area is liberated for open space and other uses. Renderings show a vision at full build-out of all

Delaware River Waterfront
Urban Development Casino /
S.S. United States
Adaptive Re-use

STEPHEN VARENHORST ARCHITECTS



In addition to accommodating a full category 2 casino, the proposal provides more than adequate room for retail and restaurant developments flanking both sides of the public landscaped plaza offering varied types and scales of experience. On the north side of the plaza a large area is reserved for mixed residential and commercial use. To the south side the landward portion of the casino and its parking are wrapped in a sculpted jacket of amenities with the additional possibility of commercial office space fronting Columbus Avenue.



*Top: View from Columbus Boulevard
Above: View looking Northwest*

We feel strongly that access to the waterfront can and should be a visible and integral part of the proposal. The SS United States is the keystone that completes that larger idea. It is exciting to be able to combine a national maritime treasure, sound business opportunities for the casino and other development, and a vibrant public space at the waterfront in keeping with the guidelines prepared by Penn Praxis in their Civic Vision for the Central Delaware.