

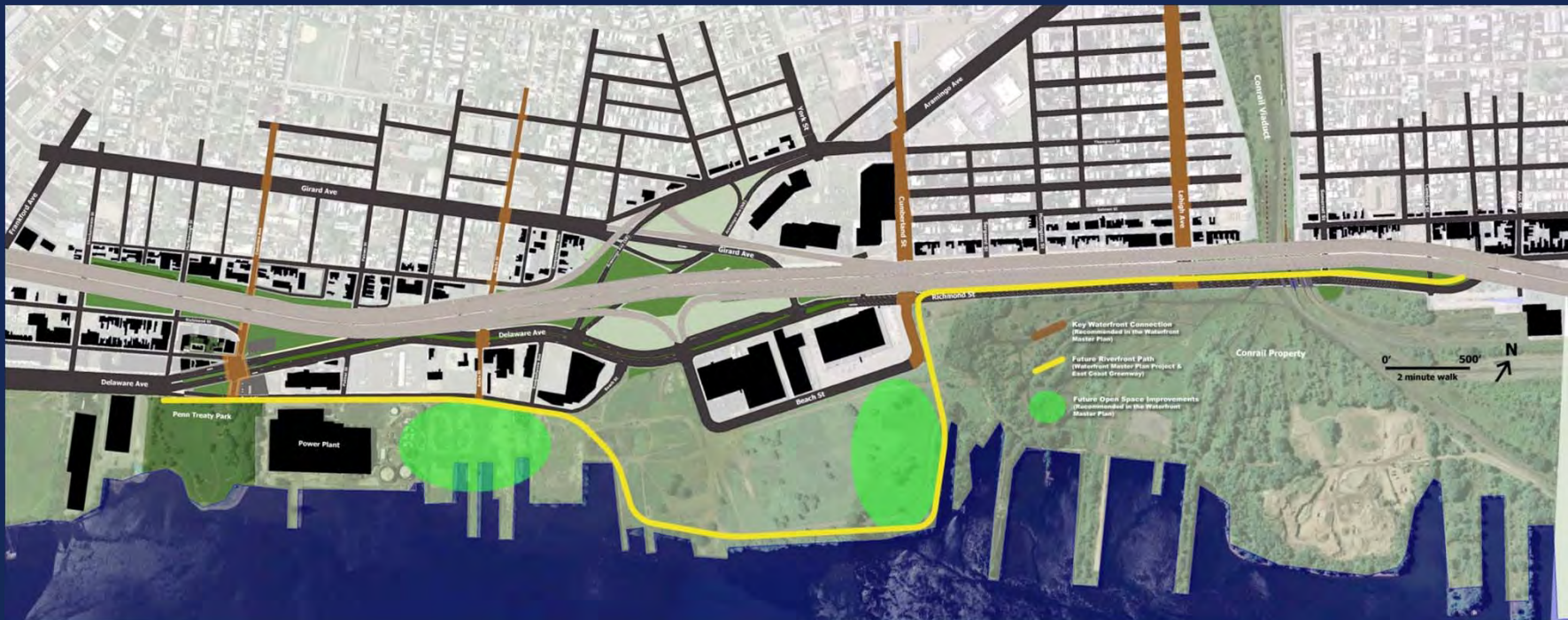
I-95 Girard Section Sustainable Action Committee Community Workshop



May 17, 2011

Agenda

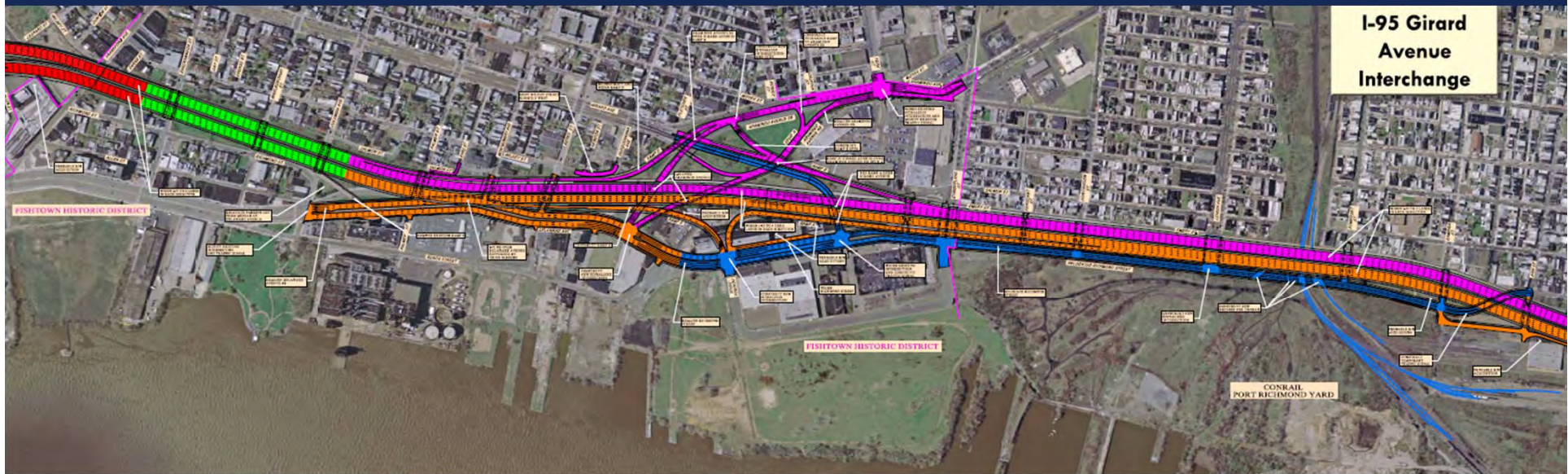
- Introductions
- Planning process
- What we've heard so far
- Design recommendations
- Workshop exercise
- Next Steps









Project Overview

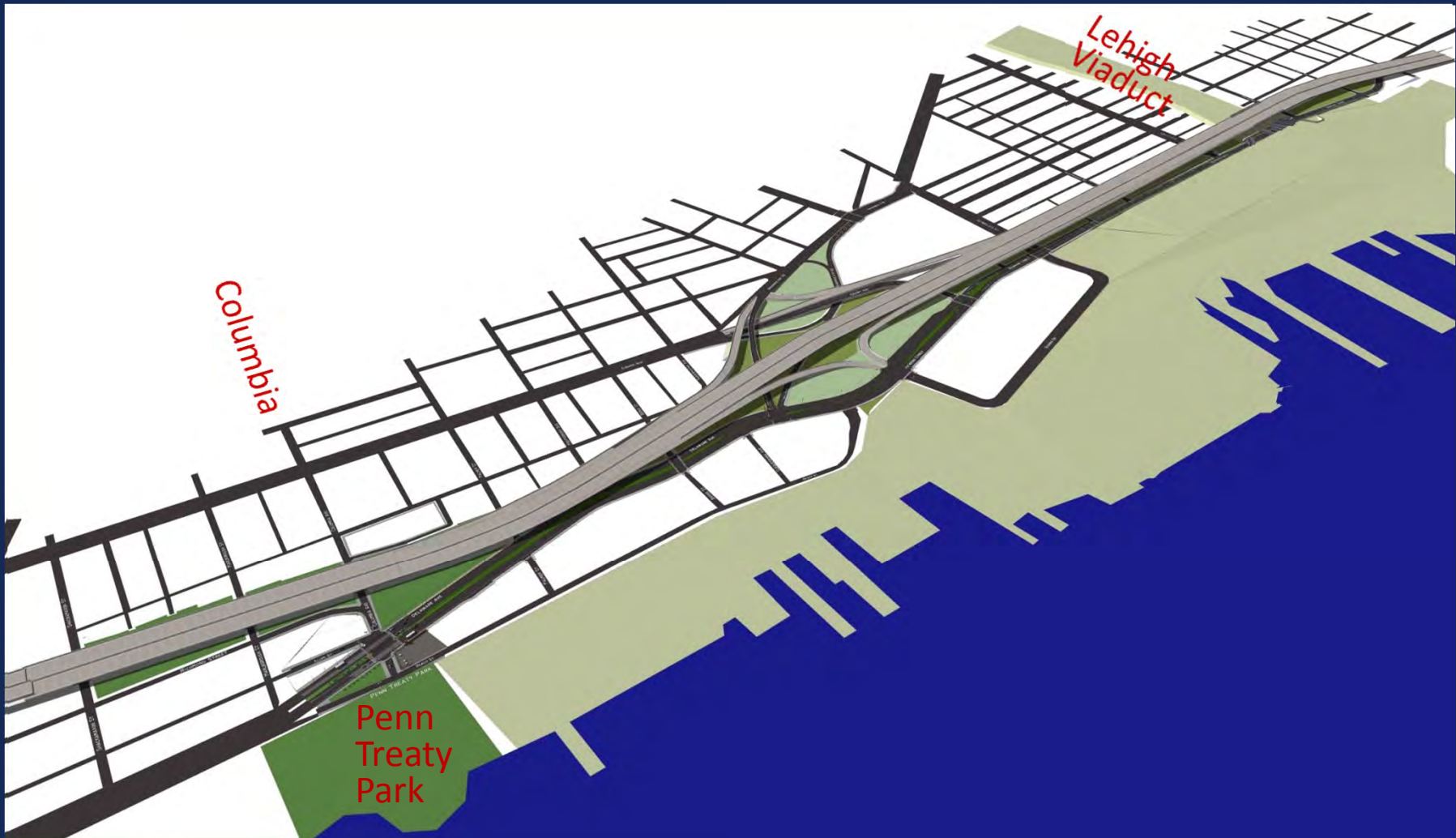


Six construction “sections” or design phases



- | | | |
|--|--|--|
|  Section GR0: Completed in Fall 2010 |  Section GR2: Spring 2012 - Fall 2013 |  Section GR4: Fall 2015 - Spring 2017 |
|  Section GR1: Fall 2011 - Spring 2013 |  Section GR3: Spring 2013 - Fall 2015 |  Section GR5: Spring 2017 - Fall 2019 |

Project Area Overview



Design Coordination & Outreach



Incorporate waterfront & community plan projects



Girard Avenue Interchange Sustainable Action Committee

- Delaware River Waterfront Corporation
- Delaware River City Corporation
- Central Delaware Advocacy Group
- Girard Coalition
- Friends of Penn Treaty Park
- New Kensington CDC
- Kensington South Neighborhood Advisory Council
- Fishtown Area Business Association
- Fishtown Action
- Fishtown Neighbors Association
- Northern Liberties Neighbors Association
- Olde Richmond Civic Association
- Port Richmond On Patrol and Civic
- Pennsylvania Horticultural Society
- Pennsylvania Environmental Council
- SEPTA

What are we trying to achieve?

- Identify specific projects to incorporate
 - Can implement some
 - Lay the groundwork for others
 - Not a factor in others
- Identify potential resources/partnerships for implementation and maintenance
- High level of detail for Phase 2 projects



What have we heard?

- Enhance waterfront access
- Create opportunities for human-scaled places
- Keep it relevant to neighborhood culture & history
- Make it as green as possible



Lighting

A) Underpass at Shackamaxon Street

1 Existing daytime view down Shackamaxon Street looking east towards the river

2 Existing night view down Shackamaxon Street looking west towards Girard Avenue

3 Proposed view down Shackamaxon Street looking east towards the river

4 Proposed view down Shackamaxon Street looking west towards Girard Avenue

Ideas:

- SAFETY IS PRIORITY
- NEIGHBORHOOD THINKS
- HOW CAN WE MAKE
- UNDERPASS FEEL LIKE
- NEIGHBORHOOD CENTER
- POSSIBLE FOR IT
- INDISPENSIBLE TO MAINTAIN
- CREATING SAFETY w/ PERCEPTIONS - NOT JUST LIGHT LEVELS
- ie. glare = intimidating + not safe
- SAFE + INTERESTING = LIGHTING OF UNDERPASS
- can't enjoy public space without lighting
- lighting that kids children can enjoy - lower level lighting - upgrade walking facilities
- lighting for all generations to enjoy
- PROBLEM IS NOT ENOUGH LIGHTING FROM PUBLIC OWNERS FOR THIS
- CREATING ALREADY FEELS SAFER
- TO THE 1 ON OTH
- BACK
- WALKS LOG IMPROVED TREATMENT
- TO THE 1 ON OTH
- IDEAS
- DESIGN TO BE SHOWN FROM FRONT OF PAPER

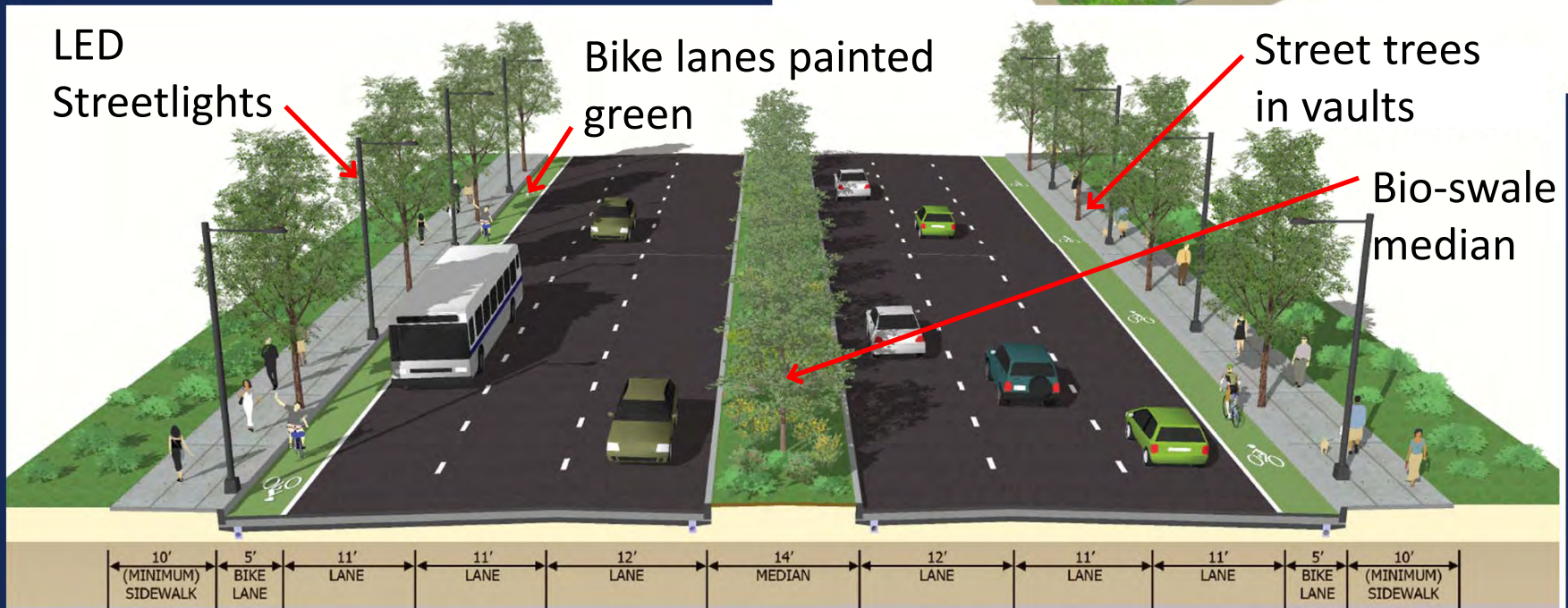
SUSTAINABLE

19125

Translating ideas to design



Richmond Street



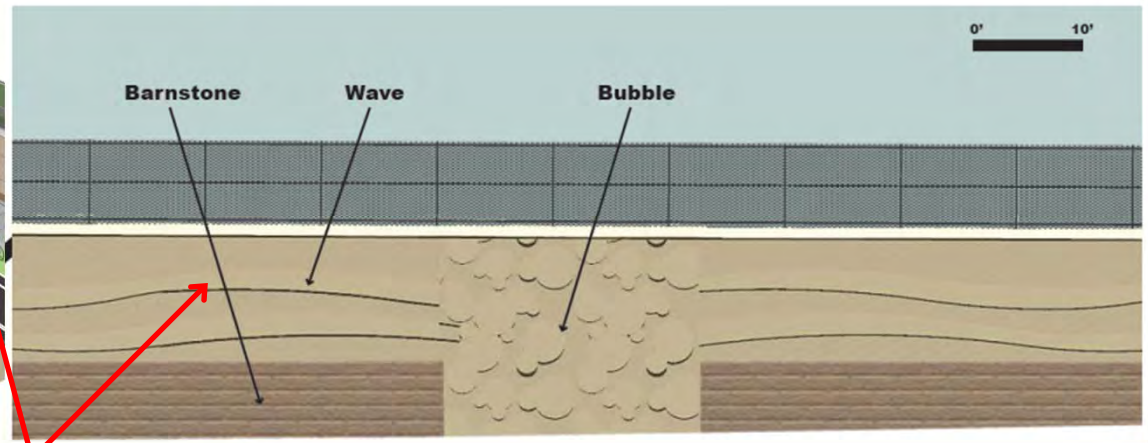
Translating ideas to design



Conrail Facilities



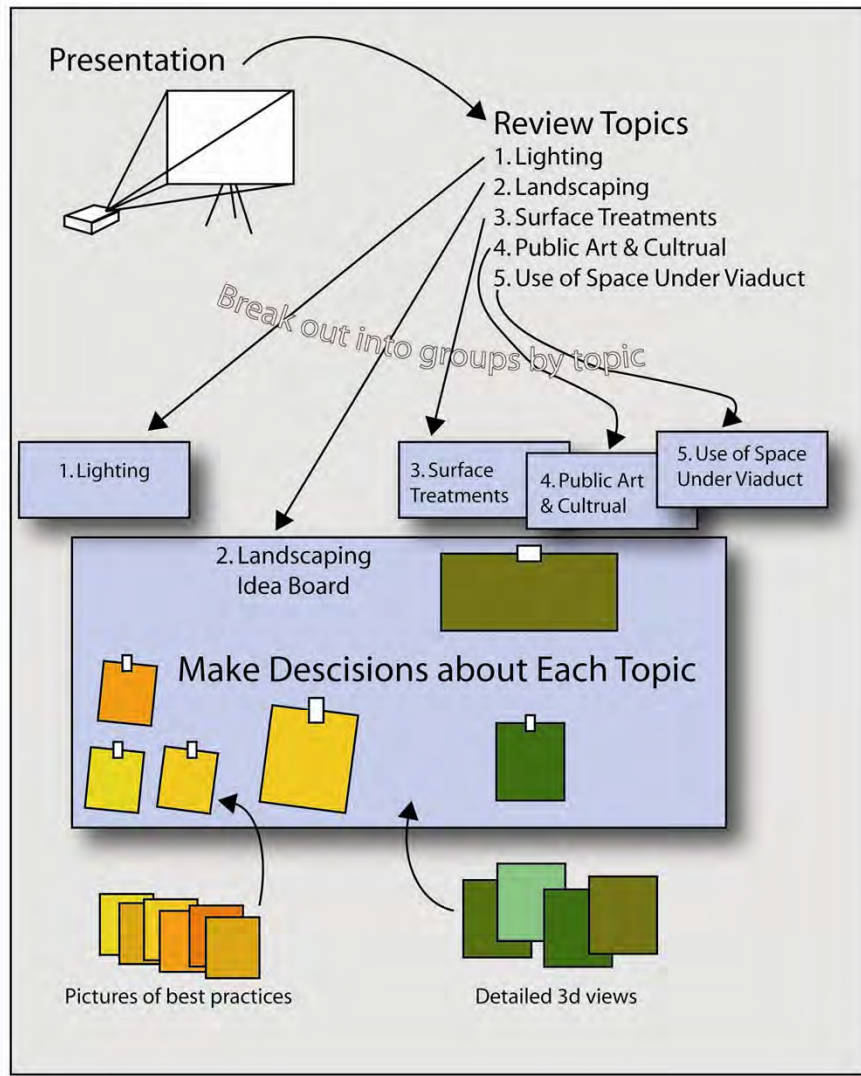
Retaining Wall



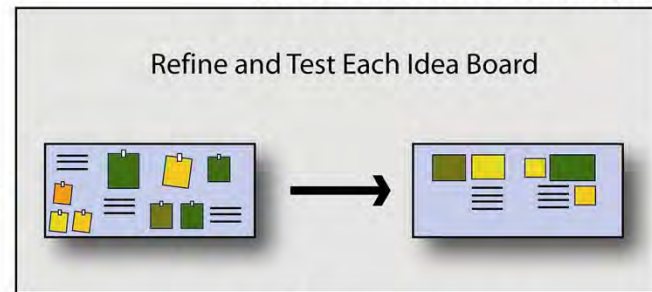
Workshop Process



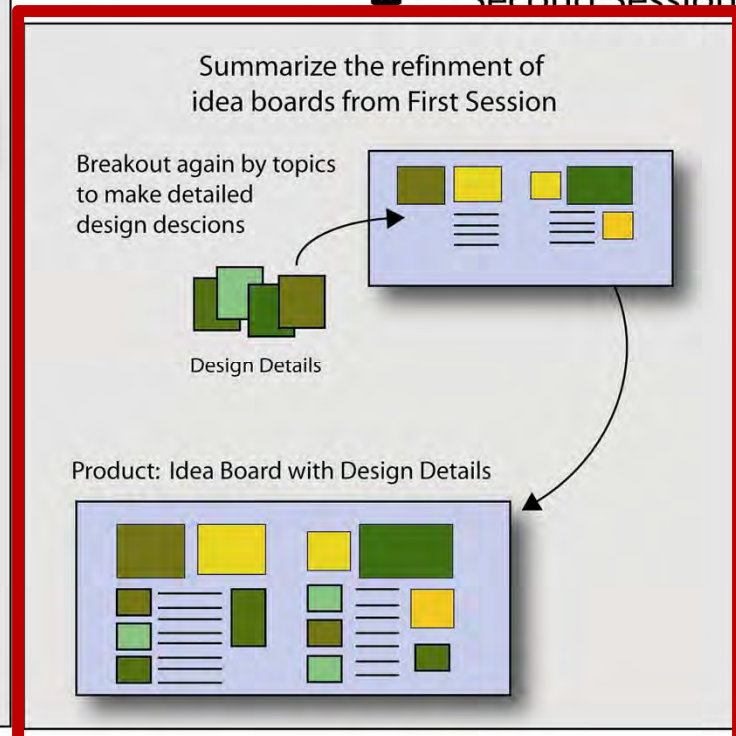
1st Session



Time Between Sessions



Second Session



Design Topics

- Underpasses
- Garden Path & Wall/Columbia Park
- Delaware Avenue & Pedestrian Connections
- Public Spaces Under the Viaduct



Clarification

Columbia Park is NOT the existing Triangle Park!



Existing Conditions

We Heard: Underpasses

- Should reflect neighborhood character
- Provide special treatments for key connections
 - Wayfinding, wall treatments, lighting, etc.
- Columbia & Marlborough should be considered key connections



Baseline Design for Underpasses

- Well-lit sidewalks, roadway & walls
- Wall & ceiling colors & designs that maximize available light
- Textured wall treatments



Underpass Community Enhancement Opportunities

- Wayfinding signage
- Graphic treatments on walls or ceilings
- Artistic lighting



We Heard: East Wall

- Maximize screening through landscaping
 - Green walls
 - Tiered beds
- Break up visible portion of walls with texture



East Wall Design Options

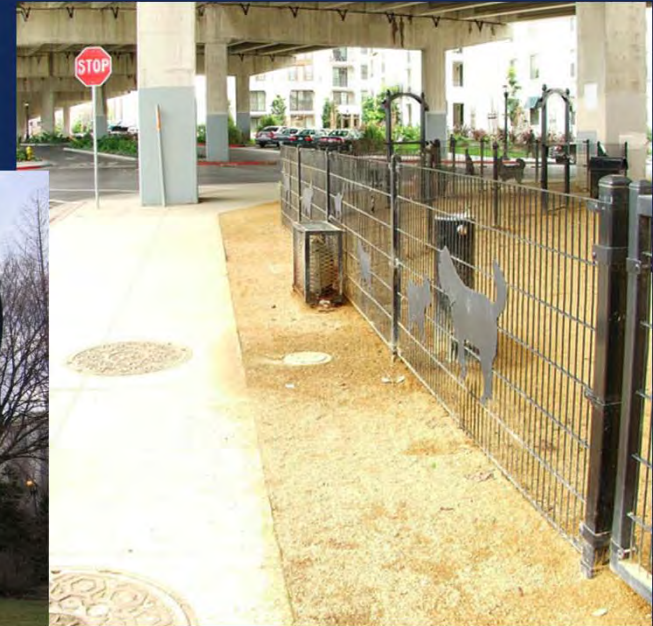
- Combine tiered landscaping & green walls
 - Screen
 - Create visual interest



We Heard: Columbia Park



- Continue landscaping from East Wall
- Parking ideas:
 - Relocate
 - Keep on site & add spaces to serve Penn Treaty Park
- Recreation uses:
 - Dog park
 - Passive areas
 - Public art installation



Baseline Design for Columbia Park



- Continue landscaping from East Wall
- Keep mature trees at southeast corner
- 32 parking spaces:
 - Along rear wall
 - Well screened
 - One way access
- Recreation uses:
 - Dog park
 - Passive areas landscaped to screen parking
 - Public art installation



Columbia Park: Alternative Parking

- 52 spaces to serve:
 - Penn Treaty Park Place
 - Replace those lost in Park Master Plan
- Reduces the size of dog park
- Maintain landscape levels to screen parking



We Heard: West Wall

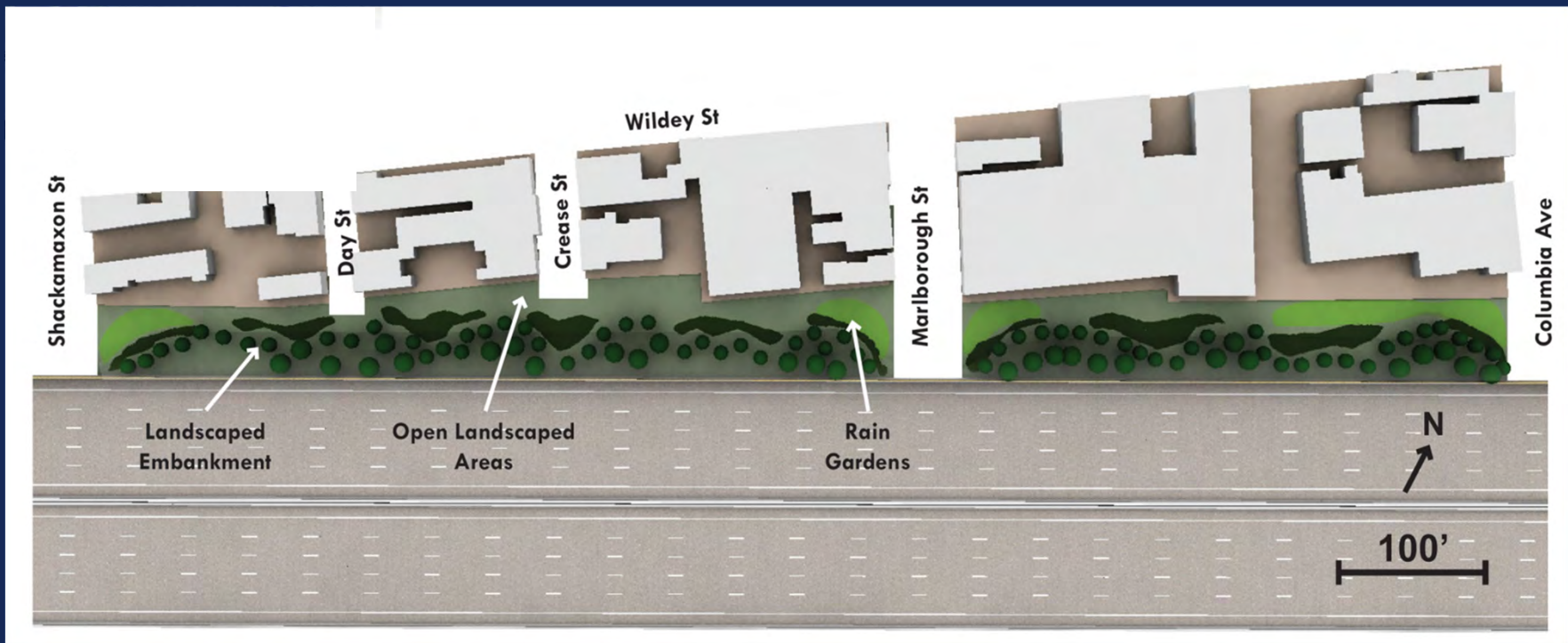


- Include rain gardens as attractive landscaping
- Consider a walking path
- Opportunity for public art
- Potential for a dog area



West Wall Garden Alternative

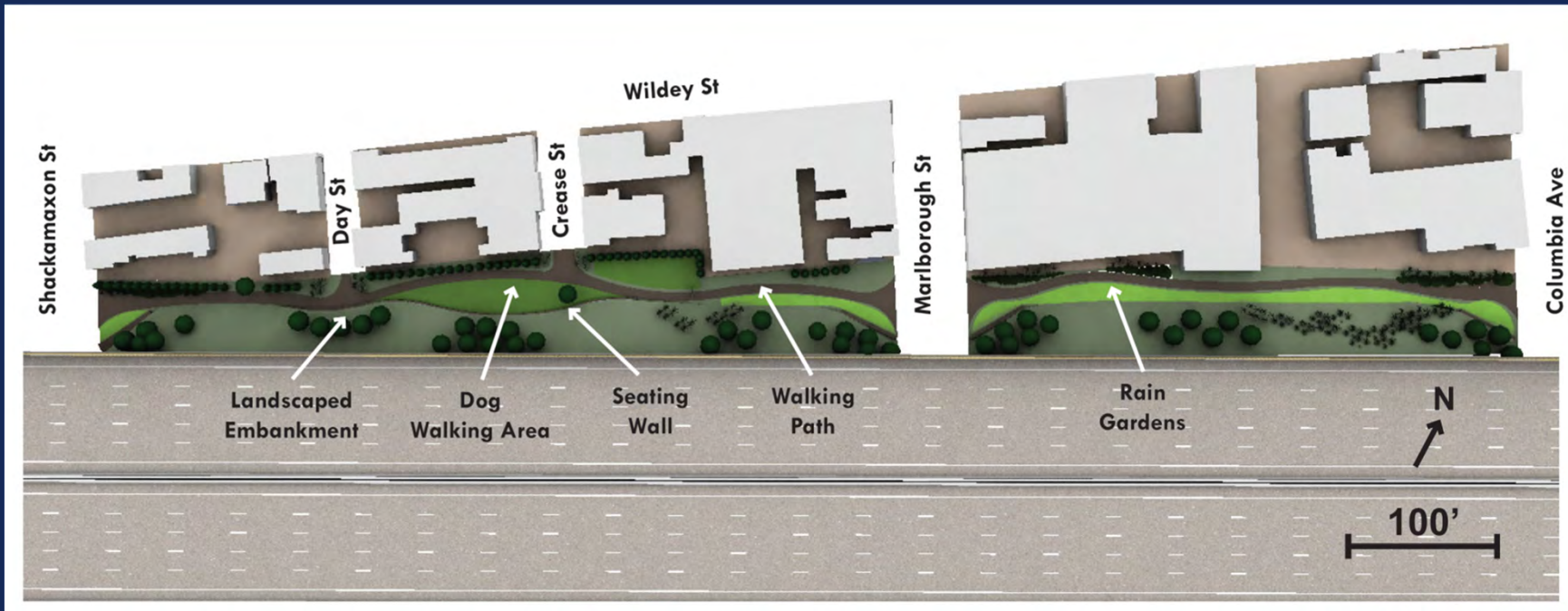
- Landscaping that eliminates need for fencing
- Rain gardens to handle runoff
- Open landscaped areas



West Wall Trail Alternative



- Landscaping that eliminates need for fencing
- Walking path
- Dog walking area
- Seating wall
- Rain gardens to handle runoff



We Heard: Delaware Avenue



Extend Richmond St. amenities to Delaware Ave.



We Heard: Pedestrian Waterfront Connections



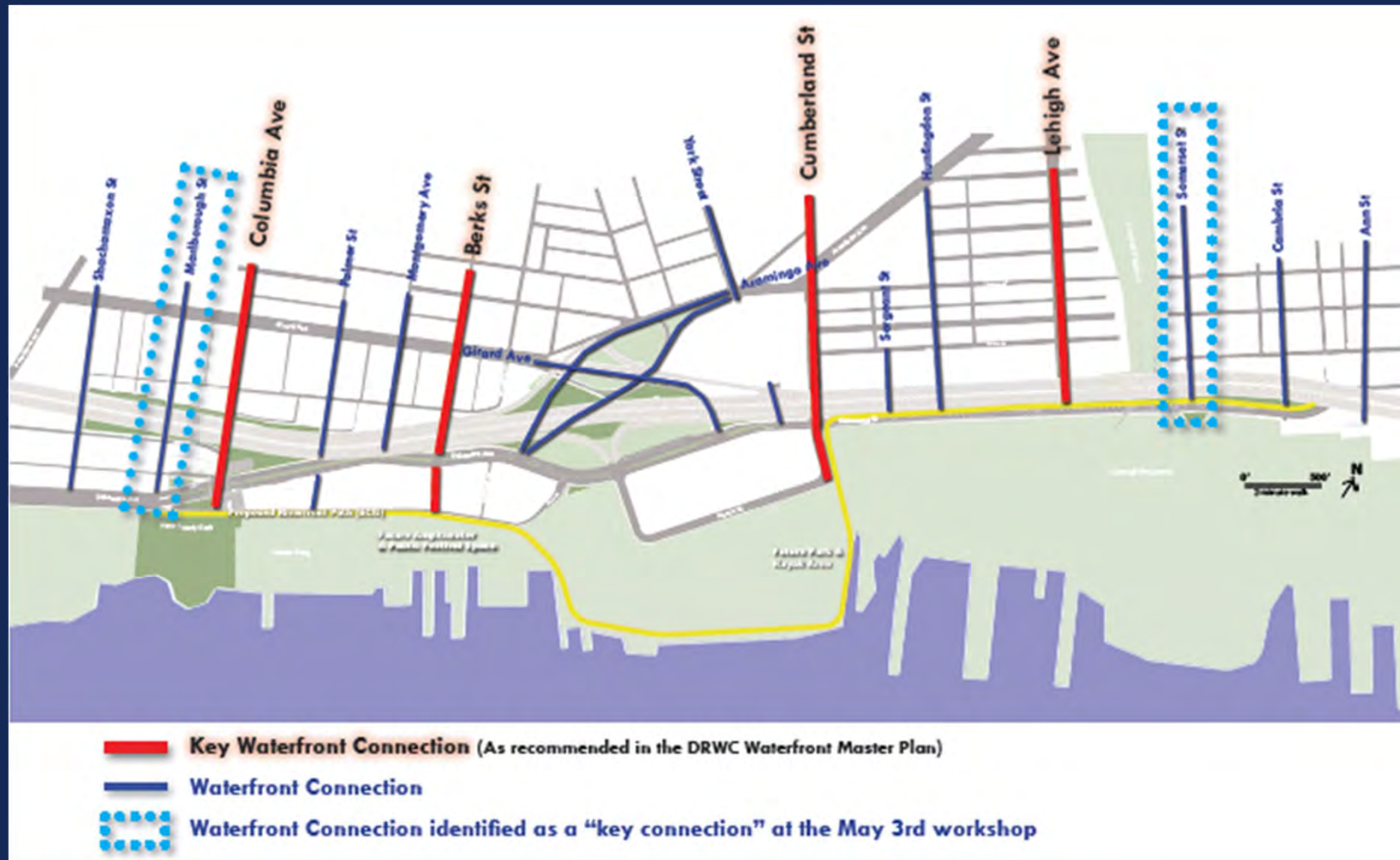
- All connections should have:
 - Street trees
 - Pedestrian lighting
 - Pervious pavement
 - Bike lanes
- Key connections should have:
 - Crosswalks
 - Street furniture
 - Public art
 - Artistic lighting or other treatments



We Heard: Pedestrian Waterfront Connections



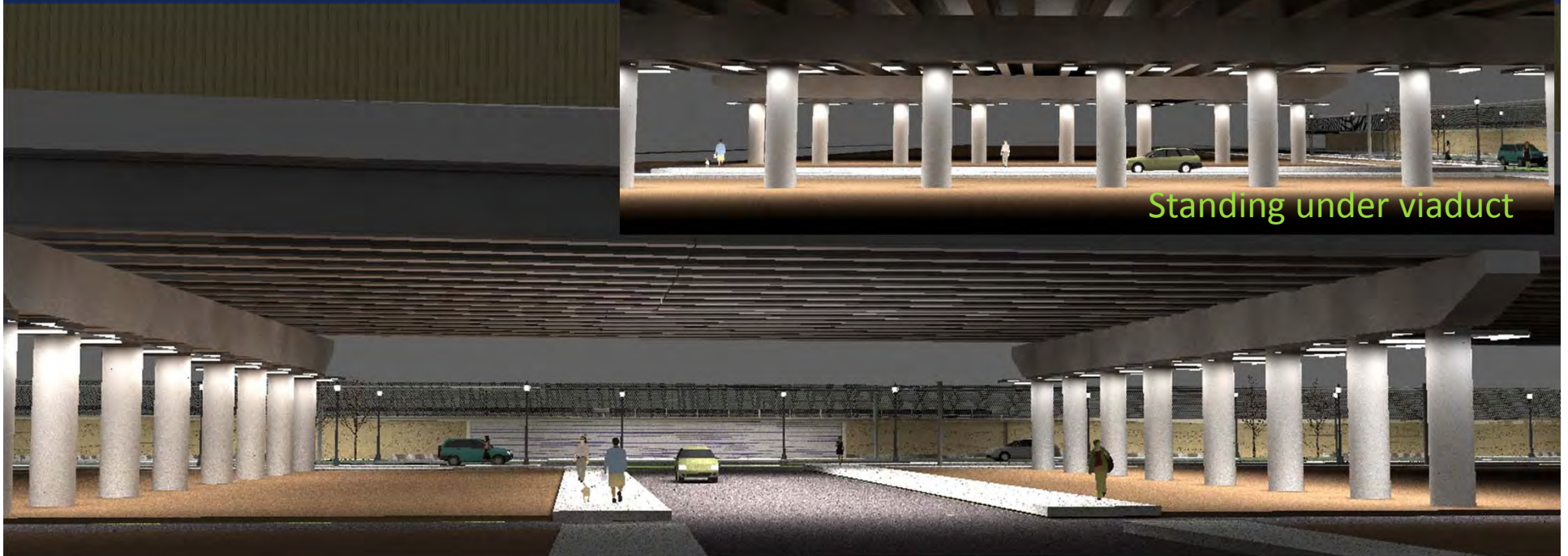
- Key connections:



Baseline Design for Connections Under Viaduct

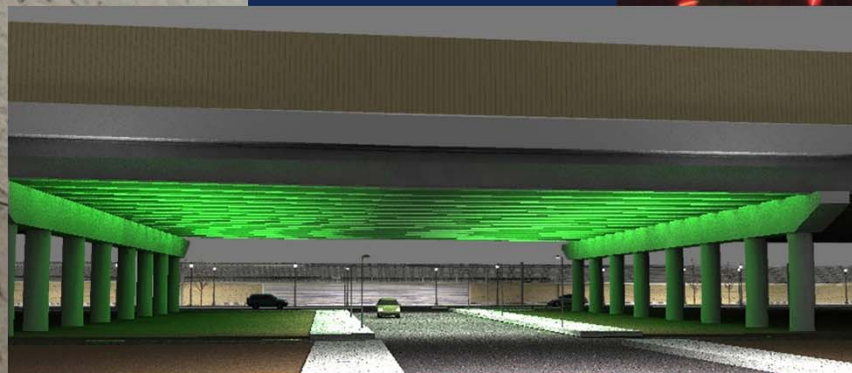
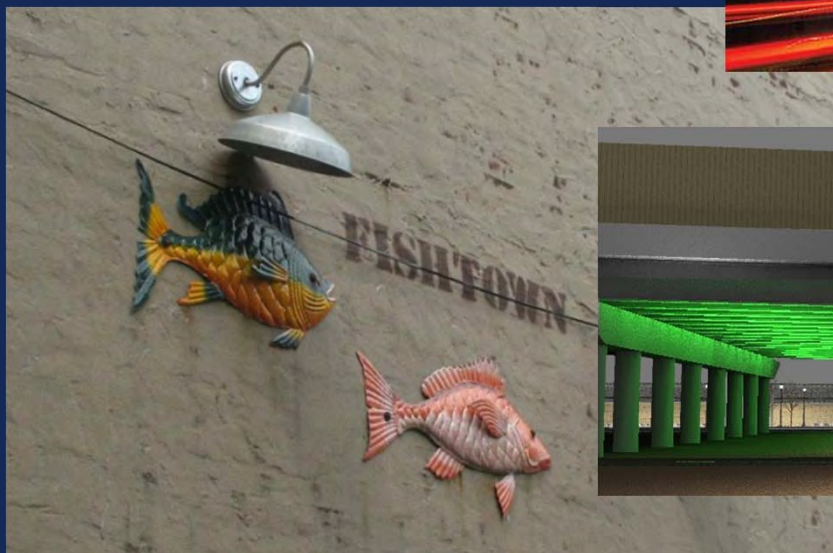


- Bright, safe lighting
- Light adjacent piers to frame street
- Existing street furniture replaced



Community Enhancement Opportunities Under Viaduct

- Wayfinding signage
- Artistic lighting
- Public art installations



We Heard: Under the Highway

- Want to use this space for passive and active recreation
- Important to maintain parking
- Off-street trail along Richmond is wanted and would create activity along the highway



Under the Highway

- Palmer to Aramingo
 - Sprinkler park
 - Parking
 - Dog Park
 - Playground



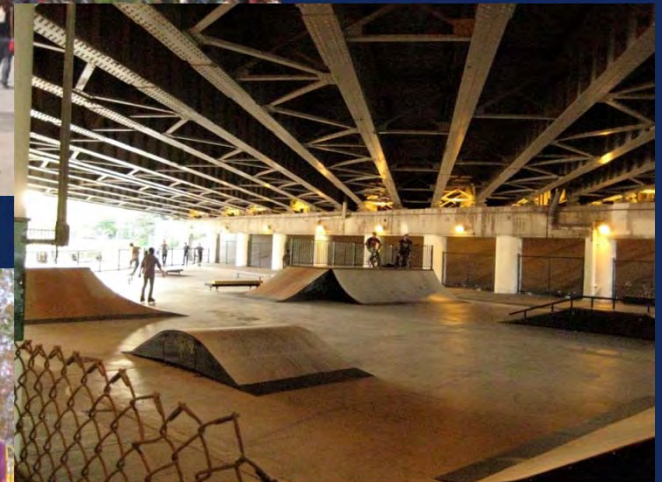
Under the Highway

- Interchange Area
 - Dirt bike park
 - Skate park
 - Playing fields
 - Walking trail with distance markers
 - Water feature with picnic grove
 - Splash fountain



Under the Highway

- Cumberland to Lehigh
 - Sprinkler park
 - Parking lots
 - Dog park
 - Open air seating for school, church and community uses
 - Skate park
 - Playground or other facility for Douglas School



Under the Highway

- Somerset to Ann
 - Sprinkler park for kids
 - Parking
 - Dog park
 - Skate park
 - Playground or other facility for Carroll School



Workshop

- Topics facilitated in stations around the room
- Review information, ask questions, work with facilitators & participants to prioritize solutions
- Try to make it to each group – we will remind you when we are midway through
- Regroup for summary and questions at end of evening



Next Steps



- Use tonight's feedback to shape design recommendations
 - Phase 2 construction documents (Highway from Shackamaxon to Palmer.)
 - Use to inform Phase 3 & 4 design issues (Highway structure Palmer to Ann)
- Begin building partnership agreements



Outreach

- May 25: Neighborhood Waterfront Meeting
 - 7:00pm Campbell Square Park
- June 20: East Kensington Neighbors Association
 - 6:30pm Philadelphia Brewing Co. 2429 Amber St.
- Sound Wall Meetings
 - Early June: Corridor-wide
 - Late June: GR-2
- Please let us know if you would like us to come to your organization





Project Websites

- www.95sustain.com
 - Information specific to the Sustainable Action Committee projects, including the I-95 Girard Avenue Interchange improvements

